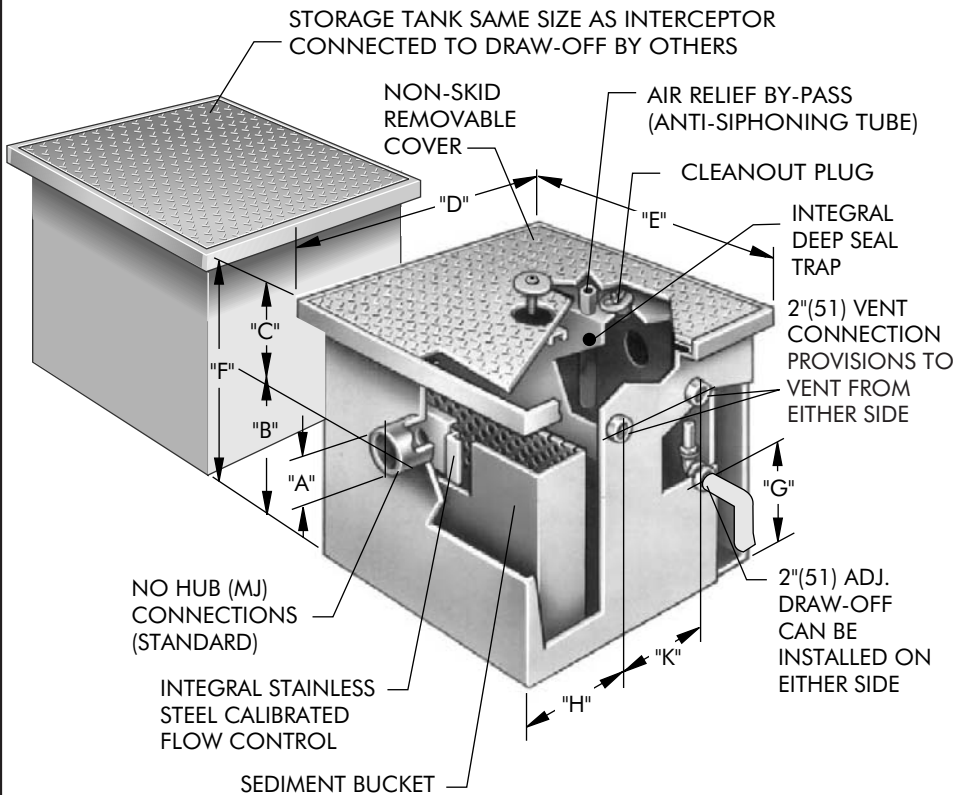


**SPECIFICATION:** Watts Drainage Products OI-600 epoxy coated inside and outside fabricated steel Oil Interceptor with flow rating of 100 to 600 GPM. Unit shall include sediment bucket, code approved deep seal trap, cover securing bolt(s), adjustable automatic draw-off assembly, double vent connections, stainless steel calibrated orifice plate and epoxy coated, non skid cover. Secondary storage tank.

**FUNCTION:** To separate lighter than water liquid pollutants from industrial waste.

**Order Code:** OI- ☐ - ☐ - ☐

**Ex. OI-615-F-T**



Flow Rate (Select One)		
Suffix	Description	
610	100 GPM	<input type="checkbox"/>
615	150 GPM	<input type="checkbox"/>
620	200 GPM	<input type="checkbox"/>
625	250 GPM	<input type="checkbox"/>
630	300 GPM	<input type="checkbox"/>
635	350 GPM	<input type="checkbox"/>
640	400 GPM	<input type="checkbox"/>
650	500 GPM	<input type="checkbox"/>
660	600 GPM	<input type="checkbox"/>

Options (Select One or More)		
Suffix	Description	
-DI	Dual Inlet	<input type="checkbox"/>
-F	Flange	<input type="checkbox"/>
-FC	Flange w/ Mem. Clamp	<input type="checkbox"/>
-HDC	Heavy Duty Cover	<input type="checkbox"/>
-IP	Injection Port (specify location)	<input type="checkbox"/>
-O	Inlet & Outlet other than standard	<input type="checkbox"/>
-SS	Stainless Steel	<input type="checkbox"/>
-T	Threaded Connections	<input type="checkbox"/>
-X	Extension as required	<input type="checkbox"/>

Optional Inlet/Outlet Sizes (When -O is selected above)		
Suffix	Description	
-4	4\"(102) Inlet/Outlet	<input type="checkbox"/>
-6	6\"(152) Inlet/Outlet	<input type="checkbox"/>

Interceptor Catalog Number	Flow Rate GPM	A Inlet & Outlet	B Base to Center	C Top to Center	D Length	E Width	F Height	G Base to Center	H	K	DI Between Inlet Centres
OI-610	100	4\"(102)	24\"(610)	10\"(254)	54\"(1372)	36\"(914)	34\"(864)	17-1/2\"(445)	20\"(508)	13\"(330)	6-1/2\"(165)
OI-615	150	4\"(102)	29\"(737)	10\"(254)	60\"(1524)	38\"(965)	39\"(991)	22-1/2\"(572)	22\"(559)	15\"(381)	6-1/2\"(165)
OI-620	200	4\"(102)	31\"(787)	10\"(254)	69\"(1753)	43\"(1092)	41\"(1041)	24-1/2\"(622)	26\"(660)	18\"(457)	6-1/2\"(165)
OI-625	250	4\"(102)	37\"(940)	10\"(254)	74\"(1880)	45\"(1143)	47\"(1194)	30\"(762)	26\"(660)	20\"(508)	6-1/2\"(165)
OI-630	300	6\"(152)	38\"(965)	10\"(254)	76\"(1930)	48\"(1219)	48\"(1219)	30-1/2\"(775)	27\"(686)	20\"(508)	9\"(229)
OI-635	350	6\"(152)	39\"(991)	10\"(254)	79\"(2007)	50\"(1270)	49\"(1245)	31-1/2\"(800)	28\"(711)	21\"(533)	9\"(229)
OI-640	400	6\"(152)	42\"(1067)	10\"(254)	83\"(2108)	55\"(1397)	52\"(1321)	34-1/2\"(876)	30\"(762)	23\"(584)	9\"(229)
OI-650	500	6\"(152)	53\"(1346)	10\"(254)	91\"(2311)	60\"(1524)	63\"(1600)	45-1/2\"(1156)	32\"(813)	25\"(635)	9\"(229)
OI-660	600	8\"(203)	60\"(1524)	10\"(254)	100\"(2540)	72\"(1829)	70\"(1778)	52\"(1321)	34\"(864)	27\"(686)	12\"(305)

Job Name \_\_\_\_\_ Contractor \_\_\_\_\_

Job Location \_\_\_\_\_ Contractor's P.O. No. \_\_\_\_\_

Engineer \_\_\_\_\_ Representative \_\_\_\_\_

WATTS Drainage reserves the right to modify or change product design or construction without prior notice and without incurring any obligation to make similar changes and modifications to products previously or subsequently sold. See your WATTS Drainage representative for any clarification. Dimensions are subject to manufacturing tolerances.